

# Excel Data Bridge

## PL\_Invoice Function



### Introduction

The PL\_Invoice function includes two separate templates which are pre-mapped to Sage 200: -

- the **Singleline template** emulates the purchase invoice entry and credit note entry screens in Sage 200, which allow you to create either a single purchase invoice, or credit note.

| Line Type | Project Code | Project Item | Nominal Code | Cost Centre | Department | Narrative                      | Tax Code | Goods Value | Tax Value | Discount Value | Transaction Analysis |
|-----------|--------------|--------------|--------------|-------------|------------|--------------------------------|----------|-------------|-----------|----------------|----------------------|
| 41100     |              |              | Ret          | ADM         |            | Cost of Sales - Default        | 1        | 1000        | 200       |                |                      |
| 41100     |              |              | Ret          | BES         |            | Cost of Sales - Materials Bes  | 1        | 1000        | 200       |                |                      |
| 41100     |              |              | SAL          | ADM         |            | Cost of Sales - Default        | 1        | 1000        | 200       |                |                      |
| 41100     |              |              | SAL          | BES         |            | Cost of Sales - Materials Bes  | 1        | 1000        | 200       |                |                      |
| 41100     |              |              | SCO          | ADM         |            | Cost of Sales - Default        | 1        | 1000        | 200       |                |                      |
| 41100     |              |              | SCO          | BES         |            | Cost of Sales - Materials Bes  | 1        | 1000        | 200       |                |                      |
| 41200     |              |              | INS          | BES         |            | Cost of Sales - Labour Install | 1        | 1000        | 200       |                |                      |
| 41200     |              |              | Ret          | BES         |            | Cost of Sales - Labour Bespok  | 1        | 1000        | 200       |                |                      |
| 41200     |              |              | SAL          | BES         |            | Cost of Sales - Labour Bespok  | 1        | 1000        | 200       |                |                      |
| 41200     |              |              | SCO          | BES         |            | Cost of Sales - Labour Bespok  | 1        | 1000        | 200       |                |                      |

- the **Multiline template** allows you to create multiple purchase invoices *and* credit notes in Sage 200 at once.

| Status | URN | Invoice/Credit | Group By ID | Supplier Code | Invoice Date | Due Date   | Reference | 2nd Reference | Net Value | Discount% | Discount Days | Header Discount Value | Header Tax Value | Line Type | Project Code | Project Item |
|--------|-----|----------------|-------------|---------------|--------------|------------|-----------|---------------|-----------|-----------|---------------|-----------------------|------------------|-----------|--------------|--------------|
|        |     | I              |             | ABC001        | 09/12/2021   | 08/01/2022 | 1234      | 4321          | 300       |           |               |                       |                  |           |              |              |
|        |     | C              |             | ABC001        | 10/12/2021   | 09/01/2022 | 52        | CN87          | 50        |           |               |                       |                  |           |              |              |
|        |     | I              |             | EVE001        | 12/12/2021   | 10/01/2022 | 200320201 | 200320201a    | 300       |           |               |                       |                  |           |              |              |
|        |     | I              |             | FOR001        | 14/12/2021   | 12/01/2022 | 200320202 | 200320202a    | 10000     |           |               |                       | 2000             |           | 0000000017   | Site Visit   |

# Excel Data Bridge

## PL\_Invoice Function



### Field Mappings

The field mappings are controlled within the **Designer** button in the Excel Data Bridge tab.

**Designer**

Validate Design

Sheet: PLInvoice

A1

**Map Fields**

**Information**

|                     |        |
|---------------------|--------|
| AllowZeroValue      | False  |
| AutoComplete        | True   |
| AutomaticPost       | True   |
| ConsolidateTaxLines | False  |
| Status              | Status |
| SumTotals           | False  |
| URN                 | URN    |

**PL Detail**

|                         |                         |
|-------------------------|-------------------------|
| CostCentre              | CostCentre              |
| Department              | Department              |
| DiscountValue           | DiscountValue           |
| GoodsValue              | GoodsValue              |
| LineType                | LineType                |
| Narrative               | Narrative               |
| NominalCode             | NominalCode             |
| ProjectCode             | ProjectCode             |
| ProjectItem             | ProjectItem             |
| TaxCode                 | TaxCode                 |
| TaxValue                | TaxValue                |
| TransactionAnalysisCode | TransactionAnalysisCode |

**PL Header**

|                            |                            |
|----------------------------|----------------------------|
| AdjustmentDocExpected      |                            |
| AuthorisationRequired      |                            |
| Company                    |                            |
| DiscountDays               | DiscountDays               |
| DueDate                    | DueDate                    |
| ExchangeRate               |                            |
| GroupByID                  | GroupByID                  |
| InvoiceCreditNoteIndicator | InvoiceCreditNoteIndicator |
| InvoiceDate                | InvoiceDate                |
| OpeningBalanceIndicator    |                            |
| QueryFlag                  |                            |
| Reference                  | Reference                  |
| SecondReference            | SecondReference            |
| SettledImmediately         |                            |
| SupplierCode               | SupplierCode               |
| TotalDiscountPercentage    | TotalDiscountPercentage    |
| TotalDiscountValue         | TotalDiscountValue         |
| TotalNetValue              | TotalNetValue              |
| TotalTaxValue              | TotalTaxValue              |
| ValidateReference          |                            |

**Status**  
Choose a cell or range of cells to display the upload status

The **Information** section contains both Excel Data Bridge specific fields, and settings controlling how transactions can be posted to Sage 200.

The **PL Detail** section shows the available Sage 200 fields for line items in the left-hand column.

If an entry appears in the right-hand column, it means the Sage 200 field is mapped to a cell, or range of cells in the Excel worksheet

The **PL Header** section shows the available Sage 200 fields for the invoice header details in the left-hand column.

Again, if an entry appears in the righthand column, it means the Sage 200 field is mapped to a cell, or range of cells in the worksheet.

An explanation of the property selected is shown at the bottom of the Designer window.

**NOTE** - These default mappings can be amended to suit your business requirement and will be explained later in the document.



### Singleline Template

The singleline template is divided into two sections in which you are required to enter data. The **invoice header information** can be entered in the top half of the template: -

|    |                            |        |  |                       |       |
|----|----------------------------|--------|--|-----------------------|-------|
| 2  |                            |        |  |                       |       |
| 3  | Status                     |        |  | 2ndReference          | A118  |
| 4  | URN                        |        |  | Validate2ndReference  | TRUE  |
| 5  | InvoiceCreditNoteIndicator | I      |  | GoodsValue            | 10000 |
| 6  | SupplierCode               | ATL001 |  | SettledImmediately    | FALSE |
| 7  | ExchangeRate               |        |  | DiscountDays          |       |
| 8  | InvoiceDate                |        |  | DiscountValue         | 0     |
| 9  | DueDate                    |        |  | TotalTaxValue         | 2000  |
| 10 | Reference                  | 24591  |  | QueryFlag             |       |
| 11 | ValidateReference          | TRUE   |  | AuthorisationRequired | FALSE |
| 12 |                            |        |  |                       |       |

The table below explains the purpose of each of the header fields: -

|                                   |   |
|-----------------------------------|---|
| <b>Status</b>                     | <p>Populated when selecting either the <b>Validate</b> or <b>Create Invoice</b> buttons on the Excel Data Bridge ribbon.</p> <ul style="list-style-type: none"> <li>The default status on a successful validation will be <b>Pending</b></li> <li>The default status on a successful creation will be <b>Processed</b></li> </ul> <p>When attempting to post to Sage 200, the status field should either be cleared, or display a status of <b>Pending</b>. Any other data entered in this field will prevent the transaction being created in Sage 200.</p> <p>Should an error be returned in this cell when attempting to post, it will appear in <b>red</b>. The error should be corrected in the worksheet, and the status field cleared before attempting to post again.</p> |
| <b>URN</b>                        | <p>Populated on a successful transaction creation in Sage 200. The field will update for each new transaction successfully posted.</p> <p>The number returned in this field enables traceability of the transaction in Sage 200.</p>  |
| <b>InvoiceCreditNoteIndicator</b> | <p>Advises Excel Data Bridge whether the transaction being posted is an <b>invoice</b>, or a <b>credit note</b>.</p> <ul style="list-style-type: none"> <li>Enter <b>I</b> to create an invoice in Sage 200 (or leave cell blank)</li> <li>Enter <b>C</b> to create a credit note in Sage 200</li> </ul>  |



|                      |   |
|----------------------|---|
| SupplierCode         | Enter the Sage 200 Supplier Account Reference in this field by either typing it in manually or browsing your Sage 200 data by right clicking on the cell and selecting Excel Data Bridge Browse.  |
| ExchangeRate         | Enter the required exchange rate for foreign currency transactions.   |
| InvoiceDate          | Enter the invoice/credit note date from the received document or leave the cell blank to post using today's date.   |
| DueDate              | Enter the due date shown on the received invoice or leave the cell blank to post using a due date calculated by taking the invoice date and adding to it the number of days displayed in the <b>Payment Terms</b> field in the <b>Payments</b> tab of the Sage 200 Supplier Record.   |
| Reference            | The invoice / credit note number is usually entered in this cell from the received document.  |
| ValidateReference    | Enter <b>TRUE</b> to check the data entered in the <b>Reference</b> cell is unique to that supplier and transaction date, else leave the cell empty to skip this validation.  |
| 2ndReference         | Enter any additional reference for the document in this field.  |
| Validate2ndReference | Enter <b>TRUE</b> to check the data entered in the <b>2ndReference</b> cell is unique to that supplier and transaction date, else leave the cell empty to skip this validation.   |
| GoodsValue           | Enter the <b>total net value</b> of the invoice.  |
| SettledImmediately   | <p>Enter <b>FALSE</b> to post an invoice with the original VAT value, not taking into account any settlement discount that may have been offered.</p> <p>Enter <b>TRUE</b> to post an invoice with a reduced VAT value having taken into account any settlement discount offered.</p> |
| DiscountDays         | Enter the number of days in which any settlement discount is valid.   |
| DiscountValue        | Enter the total value of settlement discount offered.   |

# Excel Data Bridge

## PL\_Invoice Function



|                              |  |
|------------------------------|--|
| <b>TotalTaxValue</b>         | Enter the <b>total VAT / tax value</b> of the invoice.   |
| <b>QueryFlag</b>             | Enter any single alpha character in this cell, <b>except U</b> , to post the transaction in Sage 200 with a query flag   |
| <b>AuthorisationRequired</b> | <p>Enter <b>FALSE</b> to create an invoice without an authorisation flag.</p> <p>Leaving the cell empty will create the transaction either with or without authorisation based on the <b>Invoice Authorisation</b> settings held in the Processing tab in Ledger Settings.</p> |

The **invoice line-item information** can be entered in the main area of the worksheet: -

| 13 | LineType | Projectcode | ProjectItem | NominalCode | CostCentre | Department | Narrative                      | TaxCode | GoodsValue | TaxValue | DiscountValue | TransactionAnalysis |
|----|----------|-------------|-------------|-------------|------------|------------|--------------------------------|---------|------------|----------|---------------|---------------------|
| 14 |          |             |             | 41100       | Ret        | ADM        | Cost of Sales - Default        | 1       | 1000       | 200      |               |                     |
| 15 |          |             |             | 41100       | Ret        | BES        | Cost of Sales - Materials Bes  | 1       | 1000       | 200      |               |                     |
| 16 |          |             |             | 41100       | SAL        | ADM        | Cost of Sales - Default        | 1       | 1000       | 200      |               |                     |
| 17 |          |             |             | 41100       | SAL        | BES        | Cost of Sales - Materials Bes  | 1       | 1000       | 200      |               |                     |
| 18 |          |             |             | 41100       | SCO        | ADM        | Cost of Sales - Default        | 1       | 1000       | 200      |               |                     |
| 19 |          |             |             | 41100       | SCO        | BES        | Cost of Sales - Materials Bes  | 1       | 1000       | 200      |               |                     |
| 20 |          |             |             | 41200       | INS        | BES        | Cost of Sales - Labour Install | 1       | 1000       | 200      |               |                     |
| 21 |          |             |             | 41200       | Ret        | BES        | Cost of Sales - Labour Bespok  | 1       | 1000       | 200      |               |                     |
| 22 |          |             |             | 41200       | SAL        | BES        | Cost of Sales - Labour Bespok  | 1       | 1000       | 200      |               |                     |
| 23 |          |             |             | 41200       | SCO        | BES        | Cost of Sales - Labour Bespok  | 1       | 1000       | 200      |               |                     |
| 24 |          |             |             |             |            |            |                                |         |            |          |               |                     |

The table below explains the purpose of each of the line-item fields: -

|                            |  |
|----------------------------|--|
| <b>LineType (Optional)</b> | <p>Tell Excel Data Bridge the type of transaction line you are trying to create from the following options: -</p> <ul style="list-style-type: none"> <li>• <b>P</b> = project line</li> <li>• <b>T</b> = tax line</li> <li>• <b>N</b> = nominal line</li> </ul> <p>Excel Data Bridge will post line items correctly <b>without</b> data being entered in this field. If you prefer <b>not</b> to use this an option, the field can be unmapped in the Designer and removed from the worksheet.</p> |
| <b>ProjectCode</b>         | If using Project Accounting in Sage 200, browse on this cell to gain access to project accounting data to assign a nominal line against a project code.  |
| <b>ProjectItem</b>         | If using Project Accounting in Sage 200, browse on this cell to gain access to project accounting data to assign a nominal line against a project item.  |





|                     |  |
|---------------------|--|
| NominalCode         | Browse on this cell to gain access to nominal data to assign a Sage 200 nominal code to a line-item.                     |
| CostCentre          | The Sage 200 cost centre will be updated based upon nominal code selection.  |
| Department          | The Sage 200 department will be updated based upon nominal code selection.   |
| Narrative           | The Sage 200 nominal code name will be updated based upon nominal code selection.  |
| TaxCode             | Enter the Sage 200 tax code relevant to the line-item or browse the cell to select the tax code from your Sage 200 data. |
| GoodsValue          | Enter the <b>net value</b> of the goods for the line-item.   |
| TaxValue            | Enter the <b>tax value</b> of the goods for the line-item.   |
| DiscountValue       | Enter the <b>discount value</b> of the goods for the line-item (if applicable)   |
| TransactionAnalysis | Browse on this cell to assign the line-item to any existing Transaction Analysis codes set up in Sage 200.               |

### Creating Transactions

Once you have entered your purchase invoice / credit note data in the template, you have the following options: -

- **Validate (optional)** – will run the data through a validation check and result in a status of **Pending**, if successful. If validation is unsuccessful, an error will be returned in **red**. This error must be rectified, and the error cleared from the status field before either validating again or selecting to Create Invoice.
- **Create Invoice** – will attempt to create the transaction in Sage 200. This process also performs a full Sage validation check. If successful, the status cell will change to **Processed**, and the **URN** cell will be populated with the transaction number assigned in Sage 200 to enable the transaction to be traced.

# Excel Data Bridge

## PL\_Invoice Function



|    |                            |           |                       |       |  |
|----|----------------------------|-----------|-----------------------|-------|--|
| 2  |                            |           |                       |       |  |
| 3  | Status                     | Processed | 2ndReference          | A118  |  |
| 4  | URN                        | 27058     | Validate2ndReference  |       |  |
| 5  | InvoiceCreditNoteIndicator | 1         | GoodsValue            | 10000 |  |
| 6  | SupplierCode               | ATL001    | SettledImmediately    | FALSE |  |
| 7  | ExchangeRate               |           | DiscountDays          |       |  |
| 8  | InvoiceDate                |           | DiscountValue         | 0     |  |
| 9  | DueDate                    |           | TotalTaxValue         | 2000  |  |
| 10 | Reference                  | 24591     | QueryFlag             |       |  |
| 11 | ValidateReference          |           | AuthorisationRequired | FALSE |  |
| 12 |                            |           |                       |       |  |

The transaction can be traced in Sage 200 by the URN populated: -

Supplier Transaction Enquiry for Atlas Ranges Ltd

Supplier Details

Code: ATL001 Address: 14 Adlington Court, Garrard Way, Kettering, Northamptonshire, NN16 3JU, Great Britain

Short name: Atlas Credit limit: £ 20000.00

Postcode: NN16 3JU Balance: £ 18869.74

Current Historical

Transactions

| Trans. Type | Trans. Date | Reference | 2nd Ref.   | Value    | Allocated | Query | Status | Memo | User  | Source   | URN   |
|-------------|-------------|-----------|------------|----------|-----------|-------|--------|------|-------|----------|-------|
| Invoice     | 09/12/2021  | 24591     | A118       | 12000.00 | 0.00      |       |        |      | Admin | Purchase | 27058 |
| Invoice     | 06/06/2020  | 0030391   | 0000003338 | 6889.74  | 0.00      |       |        |      | Admin | POP      | 27058 |

☒ Show outstanding only Maximum number of transactions to display: 100

## Consolidating Tax Lines

By default, the tax element of an invoice or credit note being posted to Sage 200 will display a separate VAT entry for each nominal line. For example, an invoice created like this: -

| NominalCode | CostCentre | Department | Narrative                      | TaxCode | GoodsValue | TaxValue | DiscountValue | TransactionAnalysis |
|-------------|------------|------------|--------------------------------|---------|------------|----------|---------------|---------------------|
| 41100       | Ret        | ADM        | Cost of Sales - Default        | 1       | 100        | 200      |               |                     |
| 41100       | Ret        | BES        | Cost of Sales - Materials Bes  | 1       | 100        | 200      |               |                     |
| 41100       | SAL        | ADM        | Cost of Sales - Default        | 1       | 100        | 200      |               |                     |
| 41100       | SAL        | BES        | Cost of Sales - Materials Bes  | 1       | 100        | 200      |               |                     |
| 41100       | SCO        | ADM        | Cost of Sales - Default        | 1       | 100        | 200      |               |                     |
| 41100       | SCO        | BES        | Cost of Sales - Materials Bes  | 1       | 100        | 200      |               |                     |
| 41200       | INS        | BES        | Cost of Sales - Labour Install | 1       | 100        | 200      |               |                     |
| 41200       | Ret        | BES        | Cost of Sales - Labour Bespok  | 1       | 100        | 200      |               |                     |
| 41200       | SAL        | BES        | Cost of Sales - Labour Bespok  | 1       | 100        | 200      |               |                     |
| 41200       | SCO        | BES        | Cost of Sales - Labour Bespok  | 1       | 100        | 200      |               |                     |

Would display in the VAT drilldown in Sage 200 like this: -

VAT Detail

Select drilldown: VAT

| VAT Code | Description | Trans. Type      | VAT Discount | VAT    | Net Value |
|----------|-------------|------------------|--------------|--------|-----------|
| 1        | Std Rate    | Purchase Invoice | 0.00         | 200.00 | 1000.00   |
| 1        | Std Rate    | Purchase Invoice | 0.00         | 200.00 | 1000.00   |
| 1        | Std Rate    | Purchase Invoice | 0.00         | 200.00 | 1000.00   |
| 1        | Std Rate    | Purchase Invoice | 0.00         | 200.00 | 1000.00   |
| 1        | Std Rate    | Purchase Invoice | 0.00         | 200.00 | 1000.00   |
| 1        | Std Rate    | Purchase Invoice | 0.00         | 200.00 | 1000.00   |
| 1        | Std Rate    | Purchase Invoice | 0.00         | 200.00 | 1000.00   |
| 1        | Std Rate    | Purchase Invoice | 0.00         | 200.00 | 1000.00   |

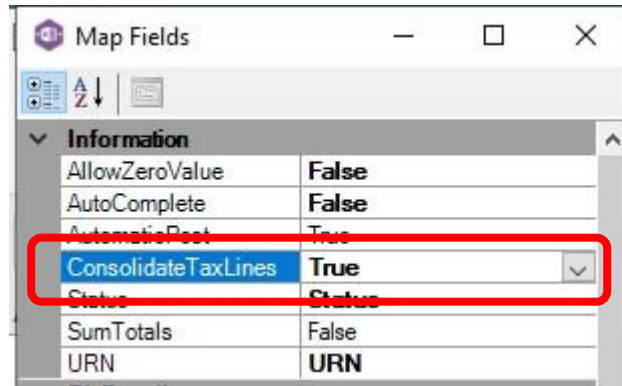
Print Drilldown

# Excel Data Bridge

## PL\_Invoice Function



To post the transaction into Sage with a consolidated tax value line instead, in the **Designer** of Excel Data Bridge, change the property for **Consolidate Tax Lines** to **True**.



Result in Sage 200 when posting further invoices / credit notes with this property set to **True**.

| VAT Detail        |          |             |                  |              |          |
|-------------------|----------|-------------|------------------|--------------|----------|
| Select drilldown: |          |             |                  |              |          |
| VAT               | VAT Code | Description | Trans. Type      | VAT Discount | VAT      |
|                   | 1        | Std Rate    | Purchase Invoice | 0.00         | 2000.00  |
|                   |          |             |                  |              | 10000.00 |

## Multiline Template

The format of the multiline template differs to the singleline template but offers similar fields as standard.

**Columns A – N** represent the **header fields** of the invoice / credit note

| A   | B   | C              | D         | E            | F           | G          | H         | I            | J        | K         | L            | M                   | N              |
|---|-----|----------------|-----------|--------------|-------------|------------|-----------|--------------|----------|-----------|--------------|---------------------|----------------|
| <b>Excel Data Bridge</b>                              |     |                |           |              |             |            |           |              |          |           |              |                     |                |
| <b>Purchase Ledger Invoice</b><br>© Draycir Ltd. 2020 |     |                |           |              |             |            |           |              |          |           |              |                     |                |
| Status  | URN | Invoice/Credit | GroupByID | SupplierCode | InvoiceDate | DueDate    | Reference | 2ndReference | NetValue | Discount% | DiscountDays | HeaderDiscountValue | HeaderTaxValue |
|   |     | I              |           | ABC001       | 13/12/2021  | 12/01/2022 | 1234      | 4321         | 300      |           |              |                     |                |
|   |     | C              |           | ABC001       | 14/12/2021  | 13/01/2022 | 92        | CN87         | 50       |           |              |                     |                |
|   |     | I              |           | EVE001       | 16/12/2021  | 14/01/2022 | 200320201 | 200320201a   | 300      |           |              |                     |                |
|   |     | I              |           | EVE001       | 16/12/2021  | 14/01/2022 | 200320201 | 200320201a   |          |           |              |                     |                |
|   |     | I              |           | FOR001       | 18/12/2021  | 16/01/2022 | 200320202 | 200320202a   | 10000    |           |              |                     | 2000           |
|   |     | I              |           | FOR001       | 18/12/2021  | 16/01/2022 | 200320202 | 200320202a   |          |           |              |                     |                |
|   |     | I              |           | FOR001       | 18/12/2021  | 16/01/2022 | 200320202 | 200320202a   |          |           |              |                     |                |
|   |     | I              |           | FOR001       | 18/12/2021  | 16/01/2022 | 200320202 | 200320202a   |          |           |              |                     |                |
|   |     | I              |           | FOR001       | 18/12/2021  | 16/01/2022 | 200320202 | 200320202a   |          |           |              |                     |                |
|   |     | I              |           | FOR001       | 18/12/2021  | 16/01/2022 | 200320202 | 200320202a   |          |           |              |                     |                |
|   |     | I              |           | FOR001       | 18/12/2021  | 16/01/2022 | 200320202 | 200320202a   |          |           |              |                     |                |
|   |     | I              |           | FOR001       | 18/12/2021  | 16/01/2022 | 200320202 | 200320202a   |          |           |              |                     |                |
|   |     | I              |           | FOR001       | 18/12/2021  | 16/01/2022 | 200320202 | 200320202a   |          |           |              |                     |                |
|   |     | I              |           | FOR001       | 18/12/2021  | 16/01/2022 | 200320202 | 200320202a   |          |           |              |                     |                |

**Columns O – Z** represent the **line item fields** of the invoice / credit note



# Excel Data Bridge

## PL\_Invoice Function



| O        | P           | Q           | R           | S          | T          | U                              | V          | W             | X       | Y        | Z                       |
|----------|-------------|-------------|-------------|------------|------------|--------------------------------|------------|---------------|---------|----------|-------------------------|
| LineType | ProjectCode | ProjectItem | NominalCode | CostCentre | Department | Narrative                      | GoodsValue | DiscountValue | TaxCode | TaxValue | TransactionAnalysisCode |
|          |             |             | 41200       | INS        | BES        | Cost of Sales - Labour Install | 100        |               |         |          |                         |
|          |             |             | 41100       | SAL        | BES        | Cost of Sales - Materials Bes  | 200        |               |         |          |                         |
|          | 0000000017  | Site Visit  | 41100 Ret   | ADM        |            | Cost of Sales - Default        | 1000       |               | 1       | 200      |                         |
|          |             |             | 41100 Ret   | BES        |            | Cost of Sales - Materials Bes  | 1000       |               | 1       | 200      |                         |
|          |             |             | 41100 SAL   | ADM        |            | Cost of Sales - Default        | 1000       |               | 1       | 200      |                         |
|          |             |             | 41100 SAL   | BES        |            | Cost of Sales - Materials Bes  | 1000       |               | 1       | 200      |                         |
|          |             |             | 41100 SCO   | ADM        |            | Cost of Sales - Default        | 1000       |               | 1       | 200      |                         |
|          |             |             | 41100 SCO   | BES        |            | Cost of Sales - Materials Bes  | 1000       |               | 1       | 200      |                         |
|          |             |             | 41200 INS   | BES        |            | Cost of Sales - Labour Install | 1000       |               | 1       | 200      |                         |
|          |             |             | 41200 Ret   | BES        |            | Cost of Sales - Labour Bespok  | 1000       |               | 1       | 200      |                         |
|          |             |             | 41200 SAL   | BES        |            | Cost of Sales - Labour Bespok  | 1000       |               | 1       | 200      |                         |
|          |             |             | 41200 SCO   | BES        |            | Cost of Sales - Labour Bespok  | 1000       |               | 1       | 200      |                         |

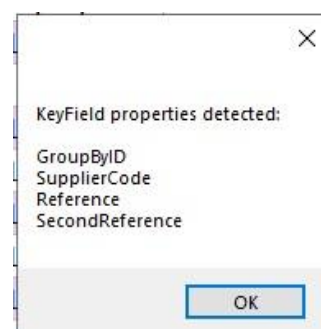
There will be slight variations in the default mappings shown in the Designer between the singleline and multiline templates, but the Sage 200 fields offered are the same.

**NOTE** - These default mappings can be amended to suit your business requirement and will be explained later in the document.

Extra fields available to the multiline template are **Group By ID** and **Transaction Analysis Code**

### Group By ID

As standard, when posting to Sage 200, Excel Data Bridge will keep together any transaction lines entered containing the same **Supplier Code / Reference / 2<sup>nd</sup> Reference**. These fields are shown in the **Key Fields** area of Excel Data Bridge.



| Invoice/Credit | GroupByID | SupplierCode | InvoiceDate | DueDate    | Reference | 2ndReference | NetValue | HeaderTax | ProjectCode | ProjectItem | NominalCode | CostCentre | Department | Narrative                      | GoodsValue | TaxCode | TaxValue | TransactionAnalysisCode |
|----------------|-----------|--------------|-------------|------------|-----------|--------------|----------|-----------|-------------|-------------|-------------|------------|------------|--------------------------------|------------|---------|----------|-------------------------|
| I              | A         | EVE001       | 16/12/2021  | 14/01/2022 | 200320201 | 200320201a   | 300      |           |             |             | 41200       | INS        | BES        | Cost of Sales - Labour Install | 100        |         |          |                         |
| I              | A         | EVE001       | 16/12/2021  | 14/01/2022 | 200320201 | 200320201a   |          |           |             |             | 41100       | SAL        | BES        | Cost of Sales - Materials Bes  | 200        |         |          |                         |
| I              | B         | FOR001       | 18/12/2021  | 16/01/2022 | 200320202 | 200320202a   | 10000    | 2000      | 0000000017  | Site Visit  | 41100 Ret   | ADM        |            | Cost of Sales - Default        | 1000       | 1       | 200      |                         |
| I              | B         | FOR001       | 18/12/2021  | 16/01/2022 | 200320202 | 200320202a   |          |           |             |             | 41100 Ret   | BES        |            | Cost of Sales - Materials Bes  | 1000       | 1       | 200      |                         |
| I              | B         | FOR001       | 18/12/2021  | 16/01/2022 | 200320202 | 200320202a   |          |           |             |             | 41100 SAL   | ADM        |            | Cost of Sales - Default        | 1000       | 1       | 200      |                         |
| I              | B         | FOR001       | 18/12/2021  | 16/01/2022 | 200320202 | 200320202a   |          |           |             |             | 41100 SAL   | BES        |            | Cost of Sales - Materials Bes  | 1000       | 1       | 200      |                         |
| I              | B         | FOR001       | 18/12/2021  | 16/01/2022 | 200320202 | 200320202a   |          |           |             |             | 41100 SCO   | ADM        |            | Cost of Sales - Default        | 1000       | 1       | 200      |                         |
| I              | B         | FOR001       | 18/12/2021  | 16/01/2022 | 200320202 | 200320202a   |          |           |             |             | 41100 SCO   | BES        |            | Cost of Sales - Materials Bes  | 1000       | 1       | 200      |                         |
| I              | B         | FOR001       | 18/12/2021  | 16/01/2022 | 200320202 | 200320202a   |          |           |             |             | 41200 INS   | BES        |            | Cost of Sales - Labour Install | 1000       | 1       | 200      |                         |
| I              | B         | FOR001       | 18/12/2021  | 16/01/2022 | 200320202 | 200320202a   |          |           |             |             | 41200 Ret   | BES        |            | Cost of Sales - Labour Bespok  | 1000       | 1       | 200      |                         |
| I              | B         | FOR001       | 18/12/2021  | 16/01/2022 | 200320202 | 200320202a   |          |           |             |             | 41200 SAL   | BES        |            | Cost of Sales - Labour Bespok  | 1000       | 1       | 200      |                         |
| I              | B         | FOR001       | 18/12/2021  | 16/01/2022 | 200320202 | 200320202a   |          |           |             |             | 41200 SCO   | BES        |            | Cost of Sales - Labour Bespok  | 1000       | 1       | 200      |                         |

An additional key field for **Group By ID** also exists, in which unique data can be entered against each transaction line needing to be posted to a single transaction in Sage 200.

See screenshot below where the first invoice containing **two** line-items contains the letter **A** in the Group By ID column for each line; the second invoice containing **ten** line-items contains the letter **B** in the Group By ID column for each line.

Any unique data can be used to keep transaction line-items together, so using numbers 1 and 2 instead would have had the same effect.



Transaction Analysis

Any transaction analysis codes appearing in the **Transaction Analysis Codes** are of Sage 200 are available to be browed upon in the Transaction Analysis Code column in Excel Data Bridge.

Transaction Analysis Codes

Transaction Analysis Codes

| Code     | Description         | Active                              |
|----------|---------------------|-------------------------------------|
| Promo505 | Promotion May 2005  | <input checked="" type="checkbox"/> |
| Promo605 | Promotion June 2005 | <input checked="" type="checkbox"/> |

OKAddDeletePrintCancel

| GoodsValue | TaxCode | TaxValue | TransactionAnalysisCode |
|------------|---------|----------|-------------------------|
| 100        |         |          |                         |

Browse

SubmitSelect AllDeselect AllCancel☐ Insert Rows

| <input type="checkbox"/> | Code     | Description         |
|--------------------------|----------|---------------------|
| <input type="checkbox"/> | Promo505 | Promotion May 2005  |
| <input type="checkbox"/> | Promo605 | Promotion June 2005 |

# Excel Data Bridge

## PL\_Invoice Function



### Creating Transactions

Excel Data Bridge offers flexibility when creating data in Sage 200. Choose the method that suits your business best. You can use both methods if the process varies between suppliers.

#### Method 1 – post invoice using default nominal and tax analysis

When creating invoices/credit notes in Sage 200, if you do not assign any nominal or tax analysis details manually, the default settings for that supplier will be assigned from the supplier record.

Amend Supplier Details for AB Cookers

Company Bank Contacts **Trading** Payment Credit Attachments Memo

Trading Details

Country code: GB - Great Britain

Default VAT code: 1 - Std Rate

VAT number: 543 1090 19

Keep transactions for: 24 calendar months

Order priority:

Default Nominal Code

44100 Stock Issues - Default

This same method can be used when creating invoices / credit notes via Excel Data Bridge providing the property for **Auto Complete** in the Designer is set to **True**.

Map Fields

Information

AllowZeroValue False

AutoComplete True

AutomaticPost True

ConsolidateTaxLines False

Status Status

SumTotals False

URN URN

When creating the invoice / credit note, just enter the required data up to the **Net Value** column...

| 3 | Status | URN | Invoice/Credit | GroupByID | SupplierCode | InvoiceDate | DueDate    | Reference | 2ndReference | NetValue |
|---|--------|-----|----------------|-----------|--------------|-------------|------------|-----------|--------------|----------|
| 4 |        |     | I              |           | ABC001       | 13/12/2021  | 12/01/2022 | 1234      | 4321         | 300      |
| 5 |        |     |                |           |              |             |            |           |              |          |
| 6 |        |     | C              |           | ABC001       | 14/12/2021  | 13/01/2022 | 92        | CN87         | 50       |

...and Excel Data Bridge will assign default nominal and tax analysis details when posting to Sage 200.

# Excel Data Bridge

## PL\_Invoice Function



### Method 2 – select which nominal and tax analysis should be assigned

When creating invoices / credit notes that contain several lines of data going to different nominal codes: -

Enter the same **header data** for each row belonging to the same transaction

Enter the **total net** and **tax values** against the first row of each transaction

| 3  | Status | URN | Invoice/Credit | GroupByID | SupplierCode | InvoiceDate | DueDate    | Reference | 2ndReference | NetValue | HeaderTax |
|----|--------|-----|----------------|-----------|--------------|-------------|------------|-----------|--------------|----------|-----------|
| 4  |        |     | I              | A         | EVE001       | 16/12/2021  | 14/01/2022 | 200320201 | 200320201a   | 300      | 20        |
| 5  |        |     | I              | A         | EVE001       | 16/12/2021  | 14/01/2022 | 200320201 | 200320201a   |          |           |
| 6  |        |     |                |           |              |             |            |           |              |          |           |
| 7  |        |     | I              | B         | FOR001       | 18/12/2021  | 16/01/2022 | 200320202 | 200320202a   | 10000    | 2000      |
| 8  |        |     | I              | B         | FOR001       | 18/12/2021  | 16/01/2022 | 200320202 | 200320202a   |          |           |
| 9  |        |     | I              | B         | FOR001       | 18/12/2021  | 16/01/2022 | 200320202 | 200320202a   |          |           |
| 10 |        |     | I              | B         | FOR001       | 18/12/2021  | 16/01/2022 | 200320202 | 200320202a   |          |           |
| 11 |        |     | I              | B         | FOR001       | 18/12/2021  | 16/01/2022 | 200320202 | 200320202a   |          |           |
| 12 |        |     | I              | B         | FOR001       | 18/12/2021  | 16/01/2022 | 200320202 | 200320202a   |          |           |
| 13 |        |     | I              | B         | FOR001       | 18/12/2021  | 16/01/2022 | 200320202 | 200320202a   |          |           |
| 14 |        |     | I              | B         | FOR001       | 18/12/2021  | 16/01/2022 | 200320202 | 200320202a   |          |           |
| 15 |        |     | I              | B         | FOR001       | 18/12/2021  | 16/01/2022 | 200320202 | 200320202a   |          |           |
| 16 |        |     | I              | B         | FOR001       | 18/12/2021  | 16/01/2022 | 200320202 | 200320202a   |          |           |

Each line-item can have its own **project / nominal code** and **tax code / value** assigned.

The first invoice contains different **tax codes** and **values** for each line-item

The second invoice contains a line-item assigned to a **project code** and **item**

Both invoices contain several line-items assigned to different **nominal codes**

| ProjectCode | ProjectItem | NominalCode | CostCent | Depar | Narrative                  | GoodsValue | TaxCode | TaxValue | TransactionAnalysis |
|-------------|-------------|-------------|----------|-------|----------------------------|------------|---------|----------|---------------------|
|             |             | 41200       | INS      | BES   | Cost of Sales - Labour Ins | 1000       | 1       | 20       |                     |
|             |             | 41100       | SAL      | BES   | Cost of Sales - Materials  | 2000       | 0       | 0        |                     |
| 0000000017  | Site Visit  | 41100       | Ret      | ADM   | Cost of Sales - Default    | 1000       | 1       | 200      |                     |
|             |             | 41100       | Ret      | BES   | Cost of Sales - Materials  | 1000       | 1       | 200      |                     |
|             |             | 41100       | SAL      | ADM   | Cost of Sales - Default    | 1000       | 1       | 200      |                     |
|             |             | 41100       | SAL      | BES   | Cost of Sales - Materials  | 1000       | 1       | 200      |                     |
|             |             | 41100       | SCO      | ADM   | Cost of Sales - Default    | 1000       | 1       | 200      |                     |
|             |             | 41100       | SCO      | BES   | Cost of Sales - Materials  | 1000       | 1       | 200      |                     |
|             |             | 41200       | INS      | BES   | Cost of Sales - Labour Ins | 1000       | 1       | 200      |                     |
|             |             | 41200       | Ret      | BES   | Cost of Sales - Labour Be  | 1000       | 1       | 200      |                     |
|             |             | 41200       | SAL      | BES   | Cost of Sales - Labour Be  | 1000       | 1       | 200      |                     |
|             |             | 41200       | SCO      | BES   | Cost of Sales - Labour Be  | 1000       | 1       | 200      |                     |

These will be the nominal codes and tax codes assigned to Sage 200 when creating invoices in Excel Data Bridge.

### Amending Templates

The worksheet templates have been created in an Excel table with the correct formatting applied.

# Excel Data Bridge

## PL\_Invoice Function



To add additional **rows**, firstly locate the cell at the bottom right-hand corner of the formatted table.

| TaxValue | TransactionAnalysisCode |
|----------|-------------------------|
|          |                         |
|          |                         |
|          |                         |

Now select the cell, then click and drag down on the arrow. Extra rows will be added with the correct formatting.

| TaxValue | TransactionAnalysisCode |
|----------|-------------------------|
|          |                         |
|          |                         |
|          |                         |
|          |                         |

To add an additional **column**, right click on the column heading where you would like your new column to appear and select

**Insert > Table Columns to the Left**

| 2ndReference | Amount | Amount% | DiscountDays |
|--------------|--------|---------|--------------|
| 4321         |        |         |              |
| CN87         |        |         |              |
| 200320201a   |        |         |              |
| 200320201a   |        |         |              |

A new column will be added, named **Column1**. Rename the column in Excel, then refer to the next section on how to map this column in the Designer.

| Column1 | 2ndReference |
|---------|--------------|
|         | 4321         |
|         |              |
|         | CN87         |
|         |              |
|         | 200320201a   |
|         | 200320201a   |

### Mapping a new column

Once a new column has been added to the template, it can be mapped to the required Sage 200 field.



# Excel Data Bridge

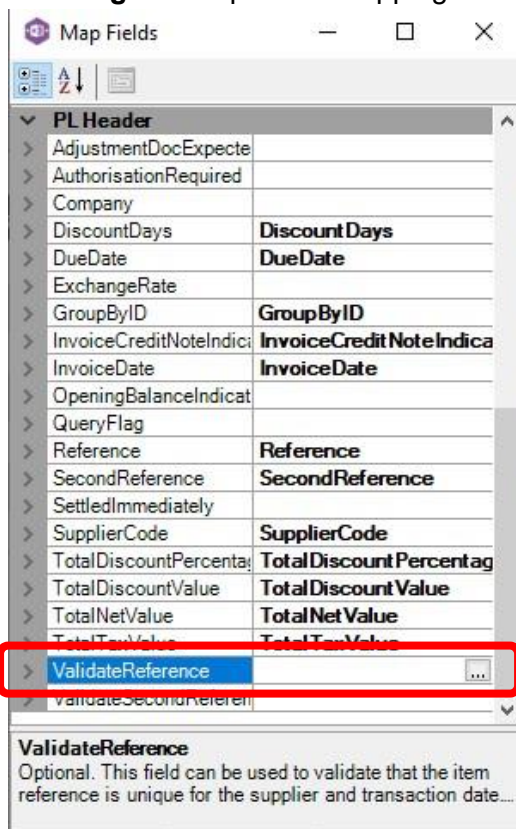
## PL\_Invoice Function




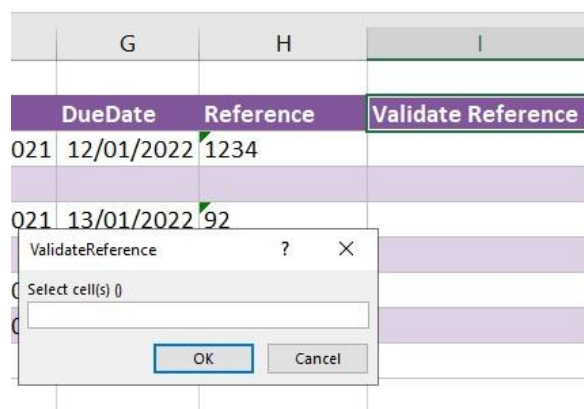
New column added to the multiline template to allow the invoice number being added to the **Reference** field to be validated in Sage 200.

| Validate Reference | 2ndReference |
|--------------------|--------------|
|                    | 4321         |
|                    | CN87         |
|                    | 200320201a   |
|                    | 200320201a   |

Click **Designer** to open the mappings for the template and locate the field to map the column to.

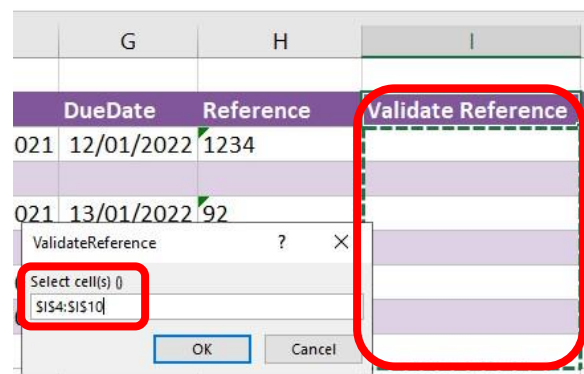


1. Click the  **Ellipsis** to the right of the **Validate Reference** field. The cell mapping window appears.



2. Now select the cell range for the **Validate Reference** column before clicking OK.

The column is now mapped and can be populated in Excel Data Bridge.



## Deleting unwanted columns

Deleting unwanted columns within a template is a two-step process: -

1. Remove the field mapping from the Designer

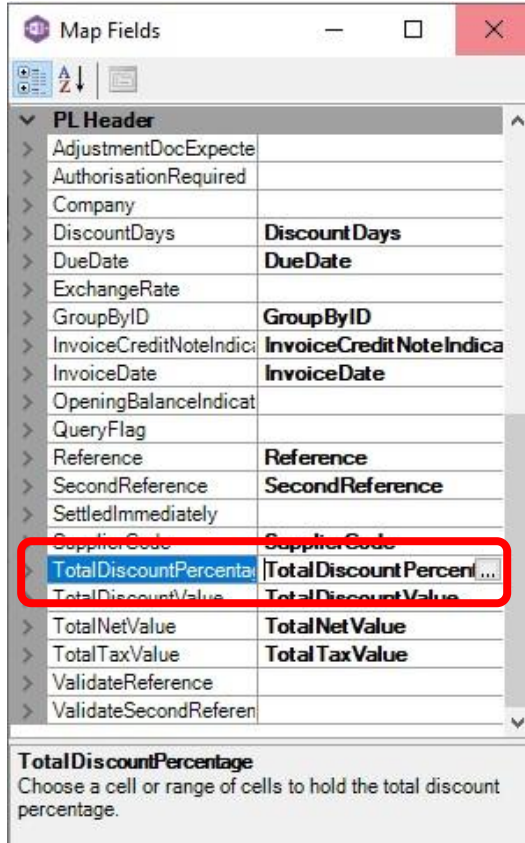
# Excel Data Bridge

## PL\_Invoice Function



2. Delete the columns in the Excel template

Open the **Designer** to view the current field mappings.



1. Clear the mapping against the field no longer required.

|                           |                    |
|---------------------------|--------------------|
| > SettledImmediately      |                    |
| > SupplierCode            | SupplierCode       |
| > TotalDiscountPercentage |                    |
| > TotalDiscountValue      | TotalDiscountValue |
| > TotalNetValue           | TotalNetValue      |
| > TotalTaxValue           | TotalTaxValue      |

2. Repeat for any other unrequired fields
3. Close the Designer.
4. Click **Validate Design** to check for errors.

Right click the column heading in the table and select **Delete > Table Columns**. Repeat for any other columns required.

